

NORTH

NC 42-63

10-23-78

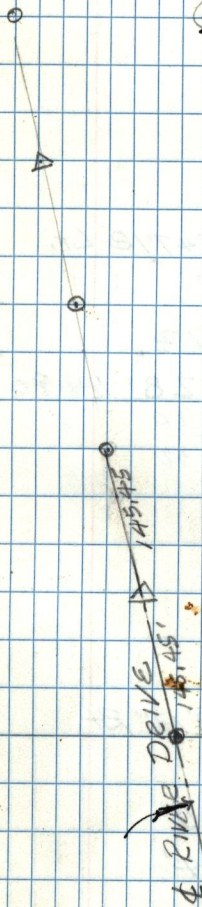
FRED F. REYNOLD, J.C. #

GEO.

(21)

So. 1/4 Cor. SEC 2, T7N, R1E

(28)



1/4 SEC. LINE

RIVER DRIVE

6°52'

RR. SPIKE

67.70  
 Sum 91 1/2 1/2 1/2 1/2  
 21.94  
 20.69  
 253  
 2.60